

# 2023 FRONT ENSEMBLE PACKET



*mbi*

INDOOR PERCUSSION

MINNESOTA BRASS   
ST. PAUL, MINNESOTA



## Welcome!

We are so excited that you are interested in auditioning for the 2023 edition of MBI Indoor Percussion! Congratulations on taking the first step towards membership in the ensemble. Please stay up to date with the calendar on the website ([mnbrass.org](http://mnbrass.org)), read all of the following information about technique and the audition process, and prepare each of the exercises in the packet. Although there is an audition component to the first few weekends, each audition day will also give you a full educational experience. Even if you think "I'm not ready for a world class ensemble yet," that's okay! The skills you learn during an MBI audition weekend will only help you improve down the road.

## Auditions

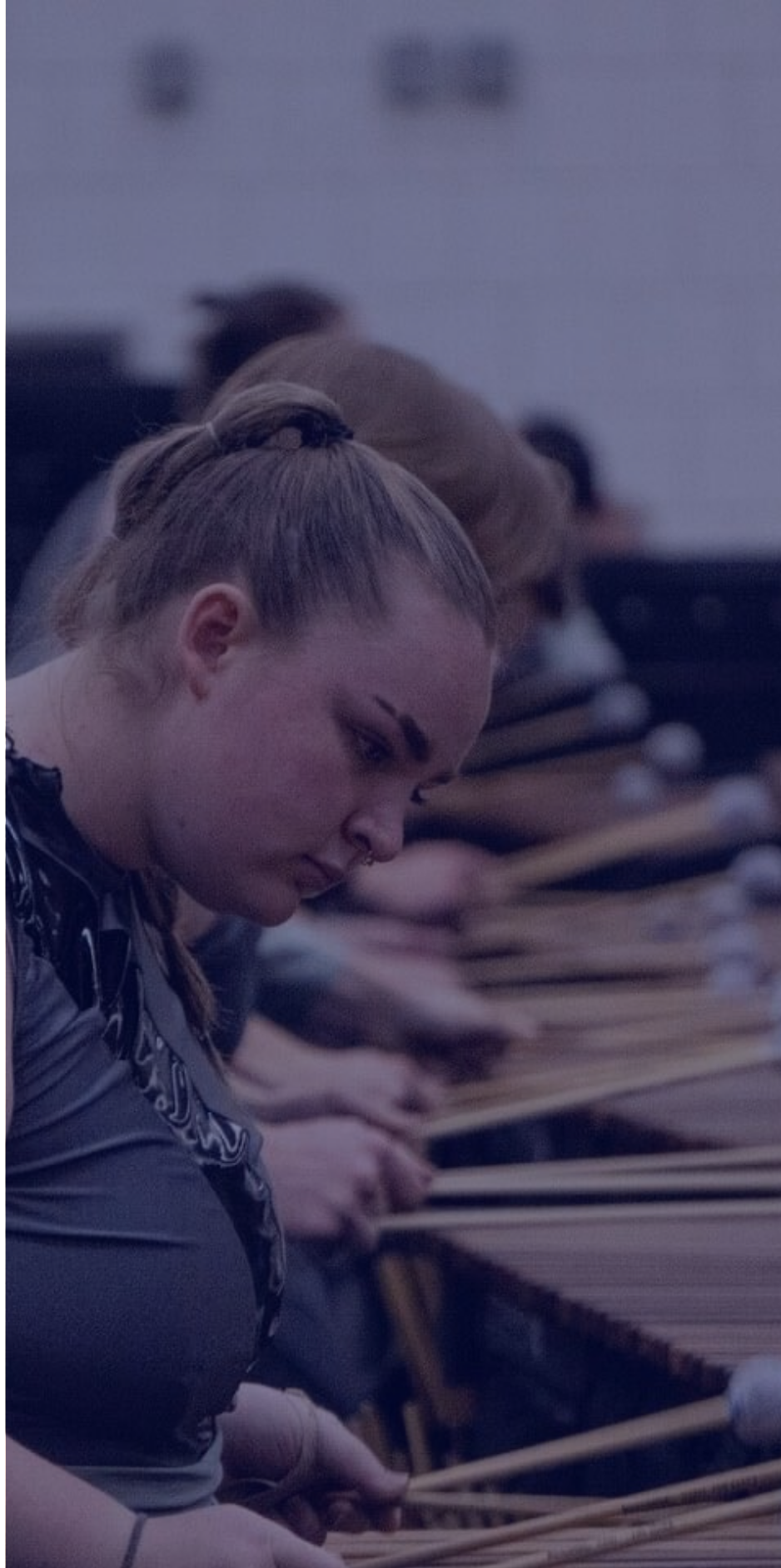
Each player will be evaluated primarily in a group setting. Additionally, everyone will also participate in an individual audition in order to showcase skills in a one-on-one setting. During the individual audition, players will be asked to perform various exercises from the packet as well as any additional material handed out during audition weekends.

## Questions?

Feel free to direct any and all questions to our staff!

Ensemble Director | Jake Esterberg  
[jake@mnbrassinc.org](mailto:jake@mnbrassinc.org)

Front Ensemble Coordinator | Alex St. Clair  
[amstclair94@gmail.com](mailto:amstclair94@gmail.com)



*mbi*

INDOOR PERCUSSION

MINNESOTA BRASS  
ST. PAUL, MINNESOTA



## Mallets

Mallet players are expected to display a strong understanding for 2 and 4 mallet (Stevens Grip). Below are some pointers on how to succeed with each grip.

### 2 Mallets:

- While holding 2 mallets, the front finger should be around  $\frac{1}{3}$  of the way up the mallet.
- Fulcrum primarily lies at the back of the hand for slower tempos; think about holding onto the mallet with just your pinky. You should be comfortable with adjusting your fulcrum, utilizing the middle or front of your hand at faster tempos.
- Follow your natural hand shape while holding the mallets. There should be an adequate amount of space between your index and middle finger to display the natural curve of your fingers. Spacing between fingers will get smaller as you get to your pinky.
- Mallets will create a 60-90 degree angle while in a playing position, adjusting to the interval between your mallets. The back knuckle of your index finger should be pointed towards the ceiling.

### 4 mallets:

- Similar to 2 mallets, follow the natural curve of your fingers, allowing space in between your point and index finger.
- Back of the inside mallet should be at the center of your palm.
- While in a playing position, the mallets should create a capital Y shape with your forearm.
- Pad of your thumb should gently rest on top of the mallet and should not be adding any additional pressure.

### Stroke:

- For both 2 and 4 mallets, we want to be creating a warm and full sound. This is done by a strong and articulate stroke downward, into the keys, while avoiding a harsh or glassy sound.
- On the way up, return the mallets to the top of the defined stroke with a similar velocity used on the way down.
- While playing continuously, try to smooth out the motions to avoid any pauses in the middle of the stroke.
- Aim for the middle of the bar. The closer you get towards the bottom of the board, aim slightly off-center in order to protect and preserve our keys.
- For both grips, fingers are not involved in creating or initiating the stroke. The motion comes from the wrist and fingers are there to support the mallet.
- While the motion comes primarily from the wrist, there will be some movement from your arm. Although your arm is not involved in creating the stroke, you should avoid locking your elbow and shoulder to allow your arm to breath.
- While in a playing position, make sure your wrists are at a level so your mallets are parallel to the ground at the bottom of the stroke.





## Auxiliary and Electronics

### Synth

- Knowledge of electronic setup is a plus, but not required. You will be trained on how to operate any electronic equipment.
- Come prepared to play all major and minor scales.
- Synth players will be asked to prepare a short 1–3 minute solo for individual auditions. This is to showcase your playing abilities that are not captured in the packet.

### Rack

- Come prepared with a base knowledge on traditional percussion instruments (suspended cymbal, snare drum, concert bass drum, tam tam, ect.)
- For most exercises, there will be a suggested practice pad/snare part. We encourage you to be creative and come up with your own ideas to fit any instruments you'll be using (such as concert bass drum or toms).
- Rack players will be asked to prepare a short 1–3 minute solo for individual auditions. This may be a previous show excerpt or you may choose to showcase a specific instrument such as a snare solo.

### Drum set

- Come prepared to showcase a range of different drumset grooves and styles.
- For most exercises, a part will be written out to show patterns or accents, but we encourage you to be creative and come up with your own ideas and style to fit the exercise.
- Drum set players will be asked to prepare a short 1–3 minute solo for individual auditions. This may be a previous show excerpt or you may choose to showcase a specific instrument such as a snare solo.



*mbi*

INDOOR PERCUSSION

MINNESOTA BRASS  
ST. PAUL, MINNESOTA

# MAJOR/MINOR OCTAVES

Repeat in all 12 major/minor scales...

Mallets

Synth

Drumset

Rack

Ad lib grooves/styles

Mallets

Synth

Drumset

Rack

# GREEN

Learn in all 12 major scales

Mallets  
Synth

Musical notation for Mallets Synth in 4/4 time, first system. The staff contains a continuous eighth-note melody. Dynamics are indicated by *p*, *mf*, *p*, *mf*, *p*, *ff*, and *mf* with hairpins.

Drumset  
Rack

Musical notation for Drumset Rack in 4/4 time, first system. The staff shows a drum pattern with 'x' marks for cymbals and dots for drums. Dynamics are indicated by *p*, *mf*, *p*, *mf*, *p*, *ff*, and *mf* with hairpins.

Mallets  
Synth

Musical notation for Mallets Synth in 4/4 time, second system. The staff contains a continuous eighth-note melody. Dynamics are indicated by *ff*, *mf*, *ff*, *p*, *ff*, and *p* with hairpins.

Drumset  
Rack

Musical notation for Drumset Rack in 4/4 time, second system. The staff shows a drum pattern with 'x' marks for cymbals and dots for drums. Dynamics are indicated by *ff*, *mf*, *ff*, *p*, *ff*, and *p* with hairpins.

# GREEN TOO

Learn in all 12 major scales

Mallets Synth

Drumset

Rack

R I r r L r I I R I r r L r I I R I r r L r I I R I r r

A. Play alternating sticking R hand lead  
 B. Play alternating sticking L hand lead  
 C. Play written sticking

Mallets Synth

Drumset

Rack

L r I I r r L r I I R I r r L r I I R I r r L r I I R I I R I I

Mallets Synth

Drumset

Rack

R I r r I I r r L r I I R I r r L r r L r r

Mallets Synth

Drumset

Rack

L r l l r r l l R l r r L r l l R l r r L r l l R

Detailed description: This musical score is for a percussion ensemble. It consists of three staves: Mallets Synth (top), Drumset (middle), and Rack (bottom). The Mallets Synth staff is in treble clef and 4/4 time, featuring eighth notes and triplets. The Drumset staff uses 'x' marks for cymbals and dots for other drums, with accents and triplets. The Rack staff uses dots for notes with accents. Below the staves is a drum pattern using letters L, r, l, and R to denote left and right hand strokes.



# NOT GREEN

Learn in all 12 major scales

Mallets

Synth

Drumset

Mallets

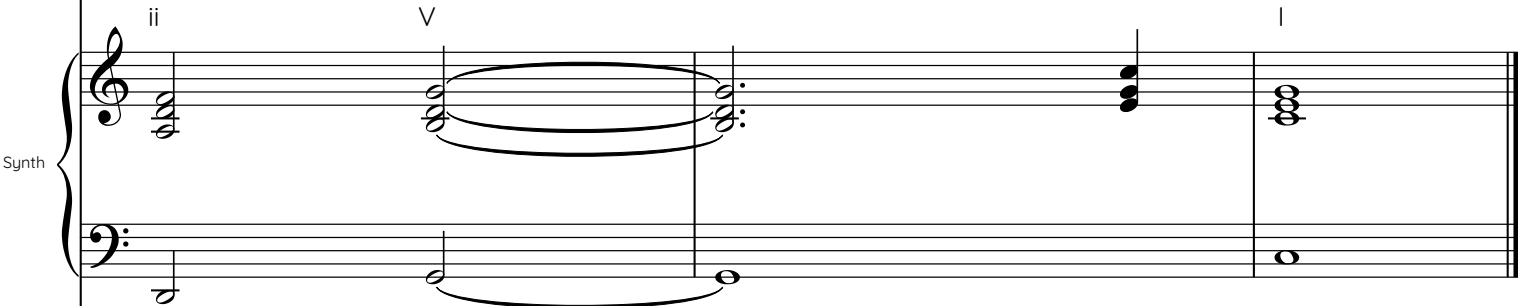
Synth

Drumset

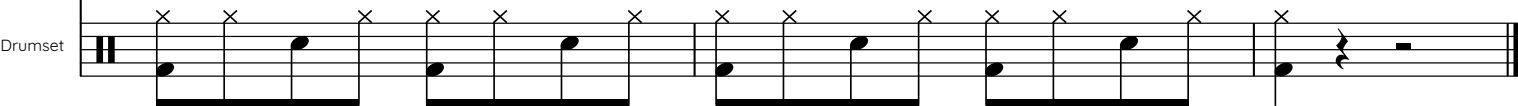
Mallets



Synth



Drumset



# MAJOR CHORDS

Mallets

Synth

Drumset

Rock

R | r | R | r | rr || rr || rr || R ...

Mallets

Synth

Drumset

Rock

Mallets

Synth

Drumset

Rack

This system contains four staves. The Mallets staff is in treble clef with a key signature of three sharps (F#, C#, G#) and a common time signature. It features a sequence of chords, with a key change to two flats (Bb, Eb) in the final measure. The Synth staff consists of two staves: the upper one in treble clef and the lower one in bass clef, both with a key signature of three sharps. The Drumset staff uses a grand staff with a common time signature, showing a rhythmic pattern of eighth notes with 'x' marks above them. The Rack staff is a grand staff with a common time signature, showing a continuous eighth-note accompaniment with accents (>) above the notes.

Mallets

Synth

Drumset

Rack

This system contains four staves. The Mallets staff is in treble clef with a key signature of two flats (Bb, Eb) and a common time signature. It features a sequence of chords, with a key change to three sharps (F#, C#, G#) in the final measure. The Synth staff consists of two staves: the upper one in treble clef and the lower one in bass clef, both with a key signature of two flats. The Drumset staff uses a grand staff with a common time signature, showing a rhythmic pattern of eighth notes with 'x' marks above them. The Rack staff is a grand staff with a common time signature, showing a continuous eighth-note accompaniment with accents (>) above the notes.

Mallets

Synth

Drumset

Rock

R | r | rr || rr || rr || R ...

Mallets

Synth

Drumset

Rock

Mallets

Synth

Drumset

Rack

R II rr II rr II

Detailed description: This system contains four staves. The Mallets staff is in treble clef with a key signature of two sharps (F# and C#). It features a complex rhythmic pattern of eighth notes and chords. The Synth staff consists of two staves (treble and bass clefs) with block chords and single notes. The Drumset staff uses 'x' marks for cymbals and dots for drums. The Rack staff features a continuous eighth-note pattern. The system concludes with a double bar line and the notation 'R II rr II rr II'.

Mallets

Synth

Drumset

Rack

R ...

Detailed description: This system contains four staves. The Mallets staff continues the rhythmic pattern from the first system. The Synth staff continues with block chords and single notes. The Drumset staff continues with 'x' marks and dots. The Rack staff continues with the eighth-note pattern. The system concludes with a double bar line and the notation 'R ...'.

Mallets

Synth

Drumset

Rack

This system contains four staves. The Mallets staff is in treble clef with a key signature of two flats and a 6/8 time signature, showing a sequence of chords. The Synth staff consists of two staves (treble and bass clefs) with a key signature of two flats and a 6/8 time signature, featuring block chords. The Drumset staff uses a treble clef with 'x' marks for snare and 'v' marks for cymbals. The Rack staff uses a treble clef with 'v' marks for hi-hats and eighth notes for the bass drum.

Mallets

Synth

Drumset

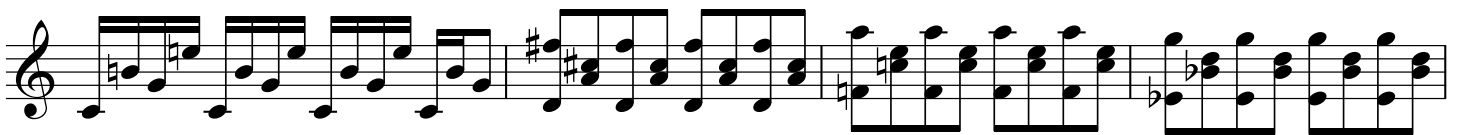
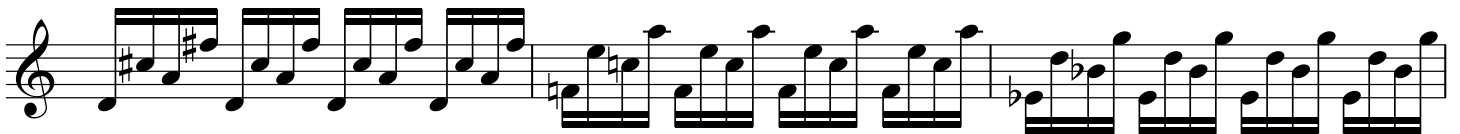
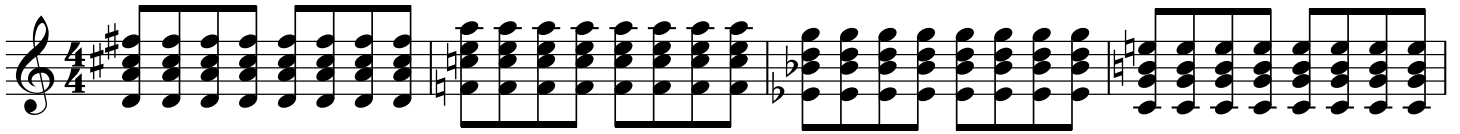
Rack

R rL IR rL ...

This system contains four staves. The Mallets staff is in treble clef with a key signature of two flats and a 6/8 time signature, showing a sequence of chords. The Synth staff consists of two staves (treble and bass clefs) with a key signature of two flats and a 6/8 time signature, featuring block chords. The Drumset staff uses a treble clef with 'x' marks for snare and 'v' marks for cymbals. The Rack staff uses a treble clef with 'v' marks for hi-hats and eighth notes for the bass drum. Below the Rack staff, there are labels: R, rL, IR, rL, ...

# Parmiggiano

Mallets

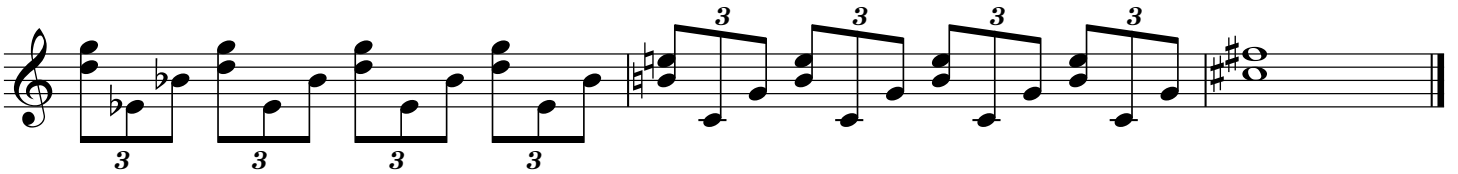
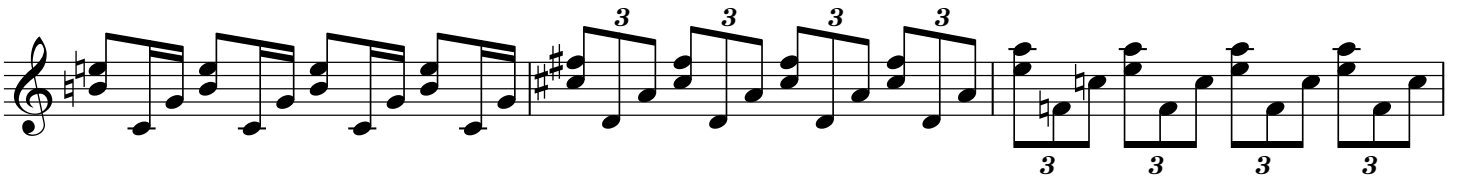
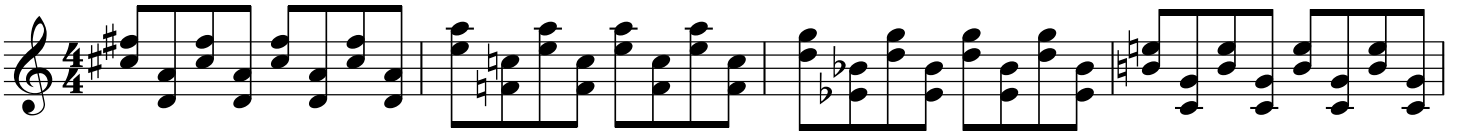




# Variations

Example of Parmissiano variations. Various patterns listed below.

Mallets



1.

4 1 2 ...  
3

ect... ect... ect... ect...

2.

4 2 1 ...  
3

ect... ect... ect... ect... ect...

3.

2 4 3 ...  
1

ect... ect... ect... ect...

4.

2 3 4 ...  
1

ect... ect... ect... ect...

5.

3 3 3 2 ... 3  
4 3 2 1

ect... ect... ect... ect...

6.

2 1 2 4 ...  
3

ect... ect... ect... ect...

7.

3 3 3 2 1 2 ...  
4 3 2 1

ect... ect... ect... ect...

8.

2 1 2 3 4 3 ...  
3

ect... ect... ect... ect...