



Flute
Clarinet
Bass Clarinet
Alto Sax
Tenor Sax
Bari Sax
Trumpet
Horn in F/Mellophone
Baritone
Tuba

Flute

MVP Studies

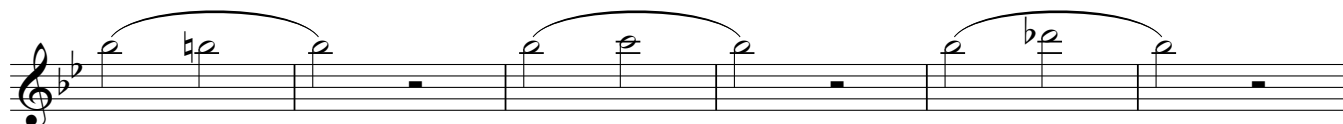
For Marching Band

Exercise #1

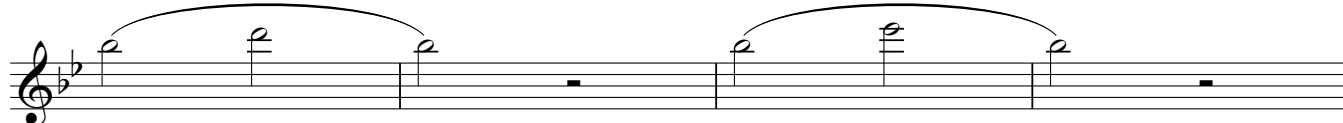
winds by: John M. Meehan
percussion by: Vinnie Angelo



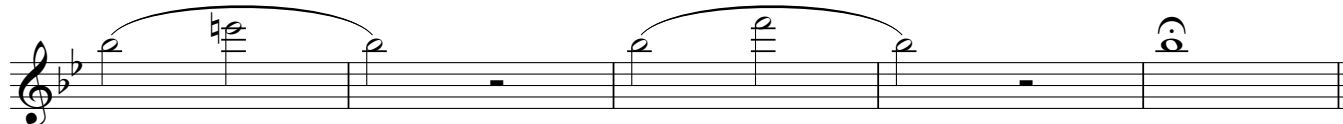
9



15



21



25

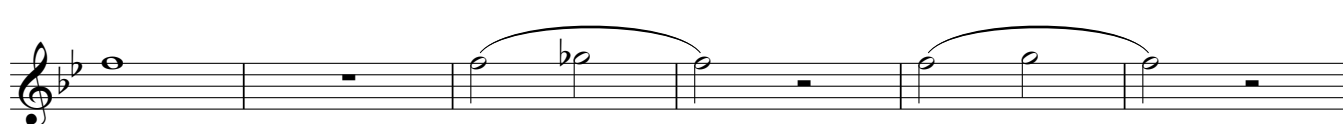
Exercise #2



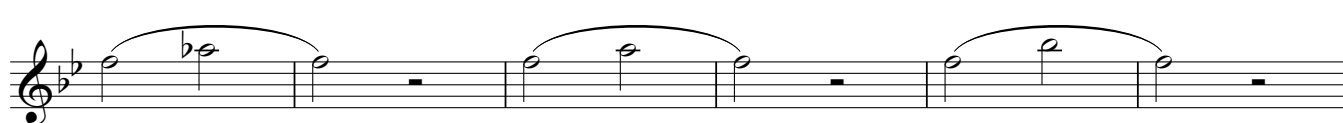
1



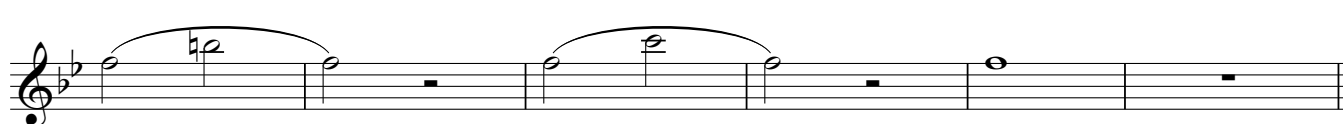
9



15



21



27

MVP Studies

For Marching Band

Exercise #3

Exercise #3 is a 12-measure piece in 4/4 time, key of B-flat major. The notation is as follows:

- Measure 1: Quarter notes G4, A4, Bb4, A4, G4.
- Measure 2: Quarter note G4, half note F#4, quarter rest.
- Measure 3: Quarter notes G4, A4, Bb4, A4, G4.
- Measure 4: Quarter note G4, half note F#4, quarter rest.
- Measure 5: Quarter notes G4, A4, Bb4, A4, G4.
- Measure 6: Quarter note G4, half note F#4, quarter rest.
- Measure 7: Quarter notes G4, A4, Bb4, A4, G4.
- Measure 8: Quarter note G4, half note F#4, quarter rest.
- Measure 9: Quarter notes G4, A4, Bb4, A4, G4.
- Measure 10: Quarter note G4, half note F#4, quarter rest.
- Measure 11: Quarter notes G4, A4, Bb4, A4, G4.
- Measure 12: Quarter note G4, half note F#4, quarter rest.

Exercise #4

Exercise #4 is a 15-measure piece in 4/4 time, key of B-flat major. The notation is as follows:

- Measure 1: Quarter notes G4, A4, Bb4, A4, G4.
- Measure 2: Quarter note G4, half note F#4, quarter rest.
- Measure 3: Quarter notes G4, A4, Bb4, A4, G4.
- Measure 4: Quarter note G4, half note F#4, quarter rest.
- Measure 5: Quarter notes G4, A4, Bb4, A4, G4.
- Measure 6: Quarter note G4, half note F#4, quarter rest.
- Measure 7: Quarter notes G4, A4, Bb4, A4, G4.
- Measure 8: Quarter note G4, half note F#4, quarter rest.
- Measure 9: Quarter notes G4, A4, Bb4, A4, G4.
- Measure 10: Quarter note G4, half note F#4, quarter rest.
- Measure 11: Quarter notes G4, A4, Bb4, A4, G4.
- Measure 12: Quarter note G4, half note F#4, quarter rest.
- Measure 13: Quarter notes G4, A4, Bb4, A4, G4.
- Measure 14: Quarter note G4, half note F#4, quarter rest.
- Measure 15: Quarter notes G4, A4, Bb4, A4, G4.

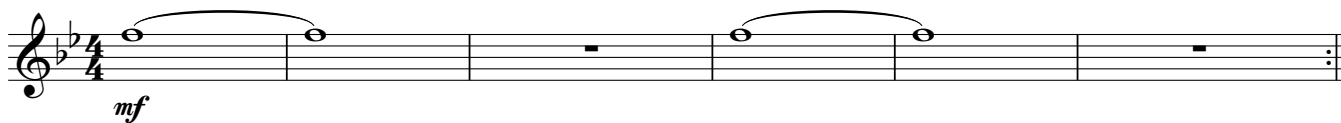
MVP Studies

For Marching Band

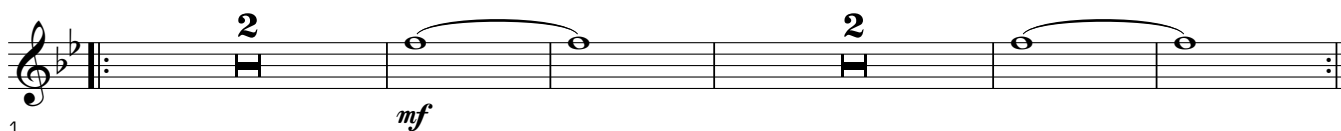
[Wind Only Supplement]

winds by: John M. Meehan

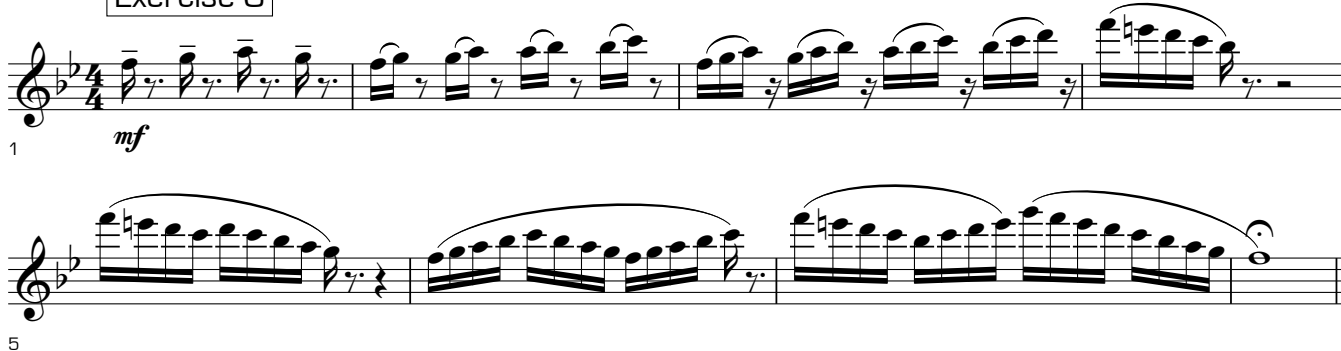
Exercise A



Exercise B



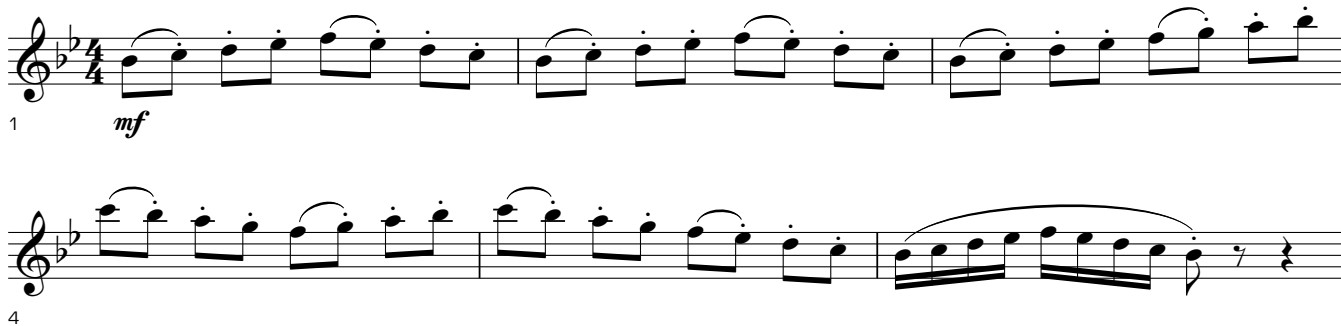
Exercise C



Exercise D



Exercise E



MVP Studies

For Marching Band

winds by: John M. Meehan
percussion by: Vinnie Angelo

Exercise #1

Exercise #1 is written in 4/4 time. It consists of five staves of music. The first staff contains measures 1 through 8. The second staff contains measures 9 through 14. The third staff contains measures 15 through 20. The fourth staff contains measures 21 through 24. The fifth staff contains measures 25 through 28, ending with a double bar line. The melody is primarily composed of eighth and quarter notes, often beamed together in pairs or groups of four. There are several rests throughout the exercise. The key signature has one flat (Bb).

Exercise #2

Exercise #2 is written in 4/4 time. It consists of five staves of music. The first staff contains measures 1 through 8. The second staff contains measures 9 through 14. The third staff contains measures 15 through 20. The fourth staff contains measures 21 through 26. The fifth staff contains measures 27 through 30, ending with a double bar line. The melody is primarily composed of eighth and quarter notes, often beamed together in pairs or groups of four. There are several rests throughout the exercise. The key signature has one flat (Bb).

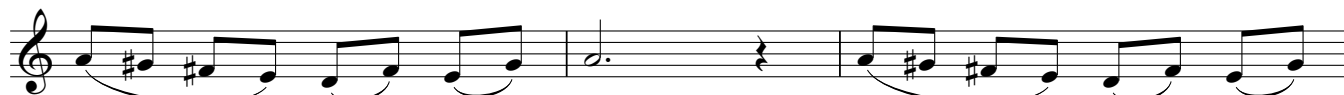
MVP Studies

For Marching Band

Exercise #3



1



7



10



13

Exercise #4



1



4



7



11



15

MVP Studies

For Marching Band

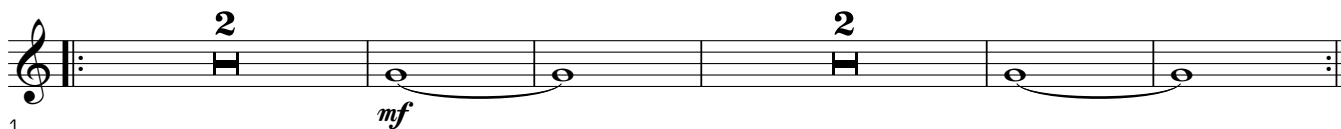
[Wind Only Supplement]

winds by: John M. Meehan

Exercise A



Exercise B



Exercise C



Exercise D



Exercise E



MVP Studies

For Marching Band

winds by: John M. Meehan
percussion by: Vinnie Angelo

Exercise #1

Exercise #1 is written in 4/4 time. The notation consists of five staves. The first staff contains measures 1 through 8. The second staff begins at measure 9 and contains measures 9 through 16. The third staff begins at measure 15 and contains measures 15 through 20. The fourth staff begins at measure 21 and contains measures 21 through 24. The fifth staff begins at measure 25 and contains measures 25 through 28, ending with a double bar line. The melody is composed of eighth and quarter notes, often beamed in pairs or groups of four, with various accidentals (sharps, flats, naturals) and rests.

Exercise #2

Exercise #2 is written in 4/4 time. The notation consists of five staves. The first staff contains measures 1 through 8. The second staff begins at measure 9 and contains measures 9 through 16. The third staff begins at measure 15 and contains measures 15 through 20. The fourth staff begins at measure 21 and contains measures 21 through 26. The fifth staff begins at measure 27 and contains measures 27 through 30, ending with a double bar line. The melody features a mix of eighth, quarter, and half notes, with frequent beaming and rests.

MVP Studies
*For Marching Band***Exercise #3**

Exercise #3 is a 4-measure piece in 4/4 time. The notation is as follows:

- Measure 1: Quarter notes G4, A4, B4, C5.
- Measure 2: Half note D5, quarter rest.
- Measure 3: Quarter notes D5, E5, F#5, G5.
- Measure 4: Half note G5, quarter rest.

The piece continues on a second line with measures 5-8:

- Measure 5: Quarter notes G5, F#5, E5, D5.
- Measure 6: Half note D5, quarter rest.
- Measure 7: Quarter notes D5, C5, B4, A4.
- Measure 8: Half note G4, quarter rest.

The third line contains measures 9-12:

- Measure 9: Quarter notes G4, A4, B4, C5.
- Measure 10: Quarter notes D5, E5, F#5, G5.
- Measure 11: Quarter notes G5, F#5, E5, D5.
- Measure 12: Half note D5, quarter rest.

The fourth line contains measures 13-16:

- Measure 13: Quarter notes G4, A4, B4, C5.
- Measure 14: Quarter notes D5, E5, F#5, G5.
- Measure 15: Quarter notes G5, F#5, E5, D5.
- Measure 16: Half note D5, quarter rest.

Measure numbers 1, 7, 10, and 13 are indicated at the start of their respective lines.

Exercise #4

Exercise #4 is an 8-measure piece in 4/4 time. The notation is as follows:

- Measure 1: Quarter notes G4, A4, B4, C5.
- Measure 2: Quarter notes D5, E5, F#5, G5.
- Measure 3: Quarter notes G5, F#5, E5, D5.
- Measure 4: Half note D5, quarter rest.

The piece continues on a second line with measures 5-8:

- Measure 5: Quarter notes G4, A4, B4, C5.
- Measure 6: Quarter notes D5, E5, F#5, G5.
- Measure 7: Quarter notes G5, F#5, E5, D5.
- Measure 8: Half note D5, quarter rest.

The third line contains measures 9-12:

- Measure 9: Quarter notes G4, A4, B4, C5.
- Measure 10: Quarter notes D5, E5, F#5, G5.
- Measure 11: Quarter notes G5, F#5, E5, D5.
- Measure 12: Half note D5, quarter rest.

The fourth line contains measures 13-16:

- Measure 13: Quarter notes G4, A4, B4, C5.
- Measure 14: Quarter notes D5, E5, F#5, G5.
- Measure 15: Quarter notes G5, F#5, E5, D5.
- Measure 16: Half note D5, quarter rest.

Measure numbers 1, 4, 7, and 11 are indicated at the start of their respective lines.

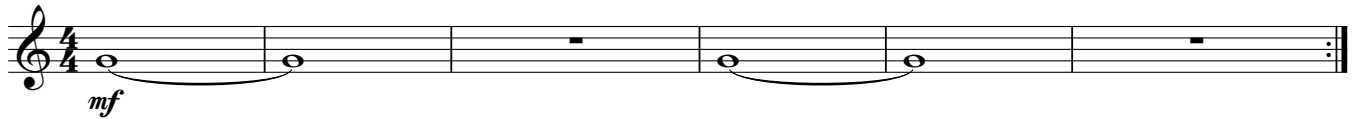
MVP Studies

For Marching Band

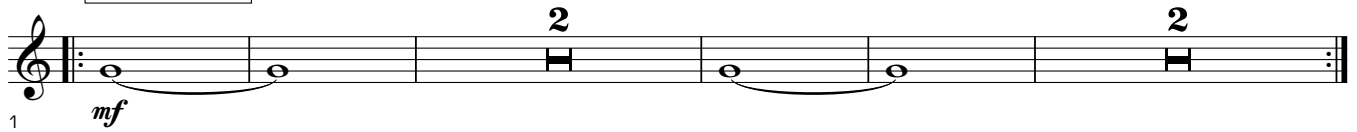
[Wind Only Supplement]

winds by: John M. Meehan

Exercise A



Exercise B



Exercise C



Exercise D



Exercise E



MVP Studies

For Marching Band

winds by: John M. Meehan
percussion by: Vinnie Angelo

Exercise #1

Exercise #1 is a 25-measure piece in 4/4 time, key of D major. It features a series of eighth-note patterns with slurs and ties. The notation is as follows:

- Measure 1: D4, E4, F#4, G4, A4, B4, C5, D5 (slur)
- Measure 2: D5, C5, B4, A4, G4, F#4, E4, D4 (slur)
- Measure 3: D4, E4, F#4, G4, A4, B4, C5, D5 (slur)
- Measure 4: D5, C5, B4, A4, G4, F#4, E4, D4 (slur)
- Measure 5: D4, E4, F#4, G4, A4, B4, C5, D5 (slur)
- Measure 6: D5, C5, B4, A4, G4, F#4, E4, D4 (slur)
- Measure 7: D4, E4, F#4, G4, A4, B4, C5, D5 (slur)
- Measure 8: D5, C5, B4, A4, G4, F#4, E4, D4 (slur)
- Measure 9: D4, E4, F#4, G4, A4, B4, C5, D5 (slur)
- Measure 10: D5, C5, B4, A4, G4, F#4, E4, D4 (slur)
- Measure 11: D4, E4, F#4, G4, A4, B4, C5, D5 (slur)
- Measure 12: D5, C5, B4, A4, G4, F#4, E4, D4 (slur)
- Measure 13: D4, E4, F#4, G4, A4, B4, C5, D5 (slur)
- Measure 14: D5, C5, B4, A4, G4, F#4, E4, D4 (slur)
- Measure 15: D4, E4, F#4, G4, A4, B4, C5, D5 (slur)
- Measure 16: D5, C5, B4, A4, G4, F#4, E4, D4 (slur)
- Measure 17: D4, E4, F#4, G4, A4, B4, C5, D5 (slur)
- Measure 18: D5, C5, B4, A4, G4, F#4, E4, D4 (slur)
- Measure 19: D4, E4, F#4, G4, A4, B4, C5, D5 (slur)
- Measure 20: D5, C5, B4, A4, G4, F#4, E4, D4 (slur)
- Measure 21: D4, E4, F#4, G4, A4, B4, C5, D5 (slur)
- Measure 22: D5, C5, B4, A4, G4, F#4, E4, D4 (slur)
- Measure 23: D4, E4, F#4, G4, A4, B4, C5, D5 (slur)
- Measure 24: D5, C5, B4, A4, G4, F#4, E4, D4 (slur)
- Measure 25: D4, E4, F#4, G4, A4, B4, C5, D5 (slur)

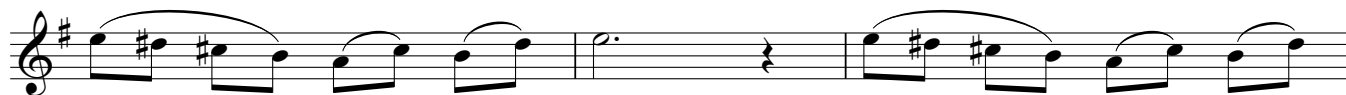
Exercise #2

Exercise #2 is a 27-measure piece in 4/4 time, key of D major. It features a series of eighth-note patterns with slurs and ties. The notation is as follows:

- Measure 1: D4, E4, F#4, G4, A4, B4, C5, D5 (slur)
- Measure 2: D5, C5, B4, A4, G4, F#4, E4, D4 (slur)
- Measure 3: D4, E4, F#4, G4, A4, B4, C5, D5 (slur)
- Measure 4: D5, C5, B4, A4, G4, F#4, E4, D4 (slur)
- Measure 5: D4, E4, F#4, G4, A4, B4, C5, D5 (slur)
- Measure 6: D5, C5, B4, A4, G4, F#4, E4, D4 (slur)
- Measure 7: D4, E4, F#4, G4, A4, B4, C5, D5 (slur)
- Measure 8: D5, C5, B4, A4, G4, F#4, E4, D4 (slur)
- Measure 9: D4, E4, F#4, G4, A4, B4, C5, D5 (slur)
- Measure 10: D5, C5, B4, A4, G4, F#4, E4, D4 (slur)
- Measure 11: D4, E4, F#4, G4, A4, B4, C5, D5 (slur)
- Measure 12: D5, C5, B4, A4, G4, F#4, E4, D4 (slur)
- Measure 13: D4, E4, F#4, G4, A4, B4, C5, D5 (slur)
- Measure 14: D5, C5, B4, A4, G4, F#4, E4, D4 (slur)
- Measure 15: D4, E4, F#4, G4, A4, B4, C5, D5 (slur)
- Measure 16: D5, C5, B4, A4, G4, F#4, E4, D4 (slur)
- Measure 17: D4, E4, F#4, G4, A4, B4, C5, D5 (slur)
- Measure 18: D5, C5, B4, A4, G4, F#4, E4, D4 (slur)
- Measure 19: D4, E4, F#4, G4, A4, B4, C5, D5 (slur)
- Measure 20: D5, C5, B4, A4, G4, F#4, E4, D4 (slur)
- Measure 21: D4, E4, F#4, G4, A4, B4, C5, D5 (slur)
- Measure 22: D5, C5, B4, A4, G4, F#4, E4, D4 (slur)
- Measure 23: D4, E4, F#4, G4, A4, B4, C5, D5 (slur)
- Measure 24: D5, C5, B4, A4, G4, F#4, E4, D4 (slur)
- Measure 25: D4, E4, F#4, G4, A4, B4, C5, D5 (slur)
- Measure 26: D5, C5, B4, A4, G4, F#4, E4, D4 (slur)
- Measure 27: D4, E4, F#4, G4, A4, B4, C5, D5 (slur)

MVP Studies
*For Marching Band***Exercise #3**

1



7



10



13

Exercise #4

1



4



7



11



15

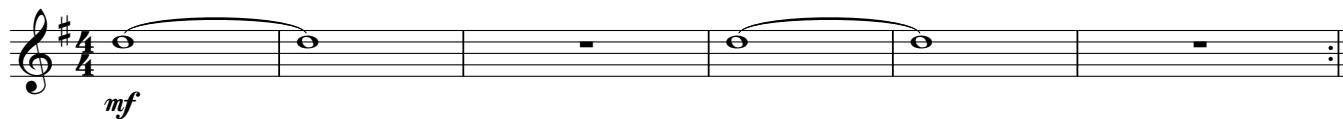
MVP Studies

For Marching Band

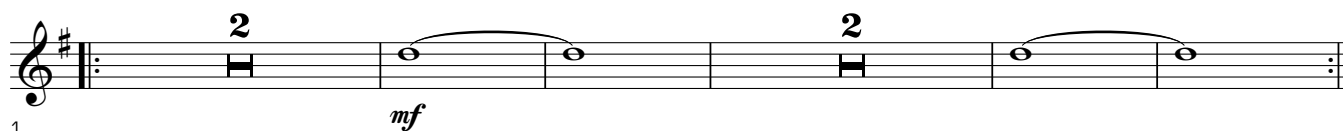
[Wind Only Supplement]

winds by: John M. Meehan

Exercise A



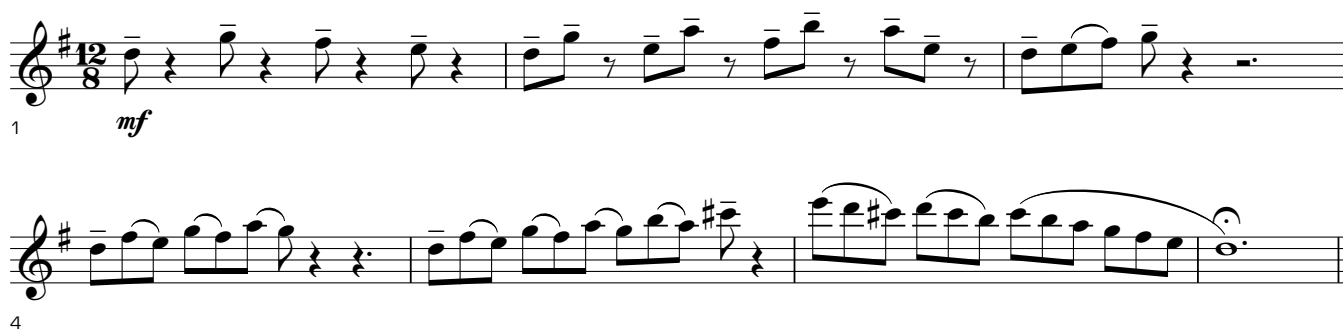
Exercise B



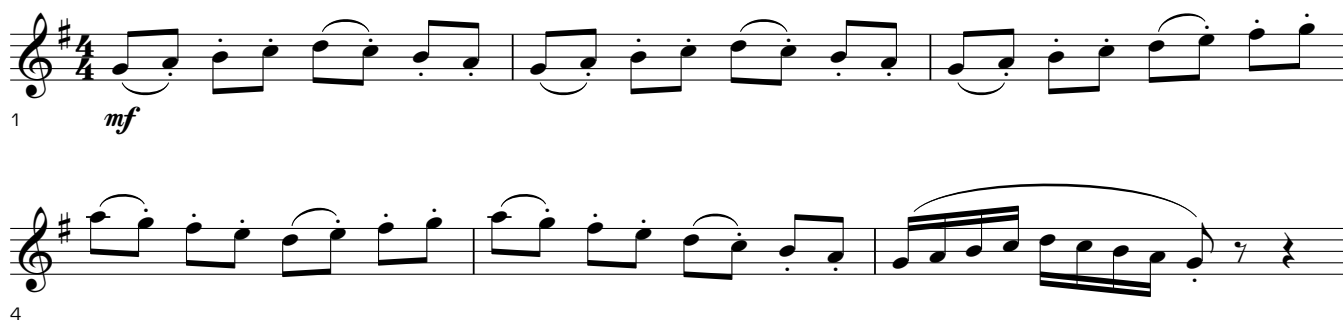
Exercise C



Exercise D



Exercise E



MVP Studies

For Marching Band

winds by: John M. Meehan
percussion by: Vinnie Angelo

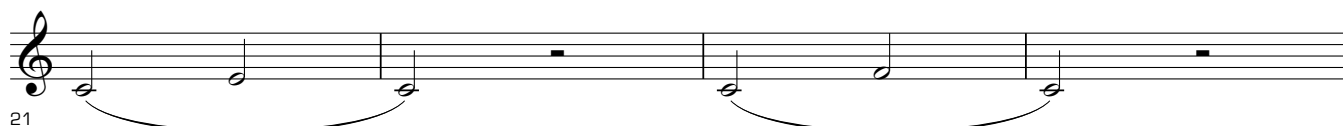
Exercise #1



9



15



21



25

Exercise #2



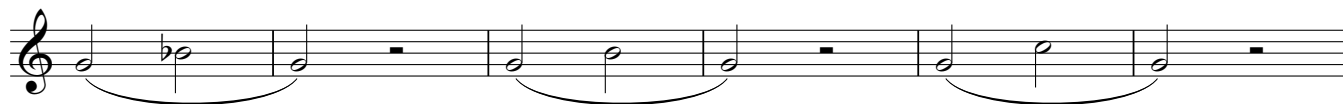
1



9



15



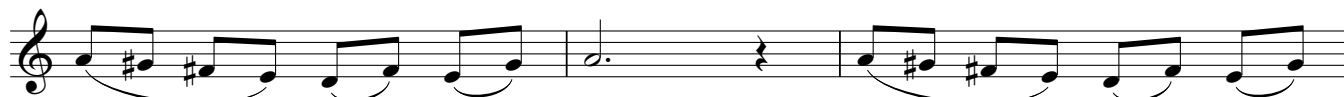
21



27

MVP Studies
*For Marching Band***Exercise #3**

1



7



10



13

Exercise #4

1



4



7



11



15

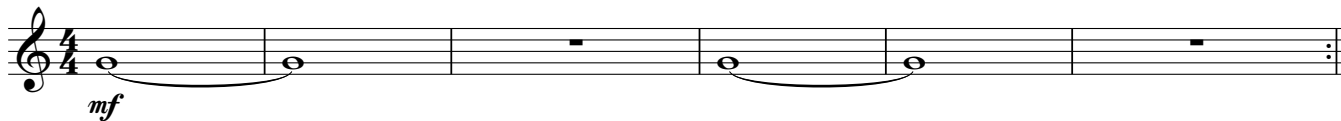
MVP Studies

For Marching Band

[Wind Only Supplement]

winds by: John M. Meehan

Exercise A



Exercise B



Exercise C



Exercise D



Exercise E



MVP Studies

For Marching Band

winds by: John M. Meehan
percussion by: Vinnie Angelo

Exercise #1

Exercise #1 is a 25-measure piece in 4/4 time, key of D major. It features a series of eighth-note patterns with slurs and ties. The notation is as follows:

- Measure 1: D4, E4, F#4, G4 (quarter note)
- Measure 2: A4, B4, C5, D5 (quarter note)
- Measure 3: E5, F#5, G5, A5 (quarter note)
- Measure 4: B5, C6, D6, E6 (quarter note)
- Measure 5: F#6, G6, A6, B6 (quarter note)
- Measure 6: C7, D7, E7, F#7 (quarter note)
- Measure 7: G7, A7, B7, C8 (quarter note)
- Measure 8: D8, E8, F#8, G8 (quarter note)
- Measure 9: A8, B8, C9, D9 (quarter note)
- Measure 10: E9, F#9, G9, A9 (quarter note)
- Measure 11: B9, C10, D10, E10 (quarter note)
- Measure 12: F#10, G10, A10, B10 (quarter note)
- Measure 13: C11, D11, E11, F#11 (quarter note)
- Measure 14: G11, A11, B11, C12 (quarter note)
- Measure 15: D12, E12, F#12, G12 (quarter note)
- Measure 16: A12, B12, C13, D13 (quarter note)
- Measure 17: E13, F#13, G13, A13 (quarter note)
- Measure 18: B13, C14, D14, E14 (quarter note)
- Measure 19: F#14, G14, A14, B14 (quarter note)
- Measure 20: C15, D15, E15, F#15 (quarter note)
- Measure 21: G15, A15, B15, C16 (quarter note)
- Measure 22: D16, E16, F#16, G16 (quarter note)
- Measure 23: A16, B16, C17, D17 (quarter note)
- Measure 24: E17, F#17, G17, A17 (quarter note)
- Measure 25: B17, C18, D18, E18 (quarter note)

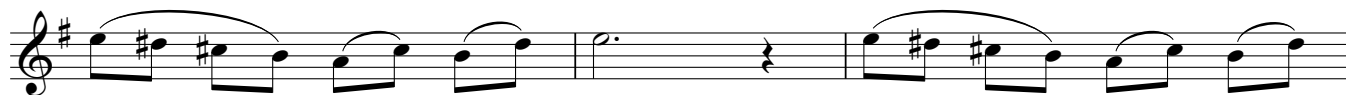
Exercise #2

Exercise #2 is a 27-measure piece in 4/4 time, key of D major. It features a series of eighth-note patterns with slurs and ties. The notation is as follows:

- Measure 1: D4, E4, F#4, G4 (quarter note)
- Measure 2: A4, B4, C5, D5 (quarter note)
- Measure 3: E5, F#5, G5, A5 (quarter note)
- Measure 4: B5, C6, D6, E6 (quarter note)
- Measure 5: F#6, G6, A6, B6 (quarter note)
- Measure 6: C7, D7, E7, F#7 (quarter note)
- Measure 7: G7, A7, B7, C8 (quarter note)
- Measure 8: D8, E8, F#8, G8 (quarter note)
- Measure 9: A8, B8, C9, D9 (quarter note)
- Measure 10: E9, F#9, G9, A9 (quarter note)
- Measure 11: B9, C10, D10, E10 (quarter note)
- Measure 12: F#10, G10, A10, B10 (quarter note)
- Measure 13: C11, D11, E11, F#11 (quarter note)
- Measure 14: G11, A11, B11, C12 (quarter note)
- Measure 15: D12, E12, F#12, G12 (quarter note)
- Measure 16: A12, B12, C13, D13 (quarter note)
- Measure 17: E13, F#13, G13, A13 (quarter note)
- Measure 18: B13, C14, D14, E14 (quarter note)
- Measure 19: F#14, G14, A14, B14 (quarter note)
- Measure 20: C15, D15, E15, F#15 (quarter note)
- Measure 21: G15, A15, B15, C16 (quarter note)
- Measure 22: D16, E16, F#16, G16 (quarter note)
- Measure 23: A16, B16, C17, D17 (quarter note)
- Measure 24: E17, F#17, G17, A17 (quarter note)
- Measure 25: B17, C18, D18, E18 (quarter note)
- Measure 26: F#18, G18, A18, B18 (quarter note)
- Measure 27: C19, D19, E19, F#19 (quarter note)

MVP Studies
*For Marching Band***Exercise #3**

1



7



10



13

Exercise #4

1



4



7



11



15

MVP Studies

For Marching Band

[Wind Only Supplement]

winds by: John M. Meehan

Exercise A



Exercise B



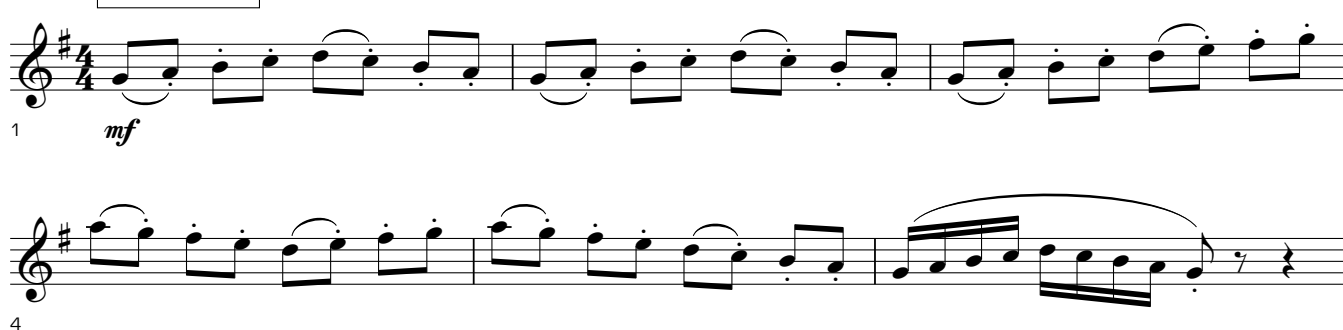
Exercise C



Exercise D



Exercise E



MVP Studies

For Marching Band

winds by: John M. Meehan
percussion by: Vinnie Angelo

Exercise #1

Exercise #1 is a 4-measure phrase in 4/4 time, written for Bb Trumpet. The melody consists of eighth notes with ties, creating a continuous line across the measures. The notes are: G4 (quarter), A4 (quarter), Bb4 (quarter), C5 (quarter), D5 (quarter), E5 (quarter), F5 (quarter), and G5 (quarter). The key signature has two flats (Bb and Eb), and the time signature is 4/4. The exercise is marked with measure numbers 9, 15, 21, and 25.

Exercise #2

Exercise #2 is a 4-measure phrase in 4/4 time, written for Bb Trumpet. The melody consists of eighth notes with ties, creating a continuous line across the measures. The notes are: G4 (quarter), A4 (quarter), Bb4 (quarter), C5 (quarter), D5 (quarter), E5 (quarter), F5 (quarter), and G5 (quarter). The key signature has two flats (Bb and Eb), and the time signature is 4/4. The exercise is marked with measure numbers 1, 9, 15, 21, and 27.

MVP Studies

For Marching Band

Exercise #3

Exercise #3 is written in 4/4 time. It consists of 13 measures. The notation is as follows:

- Measure 1: Quarter notes C4, D4, E4, F4, tied to the next measure.
- Measure 2: Quarter notes G4, A4, B4, C5, tied to the next measure.
- Measure 3: Quarter notes D5, E5, F5, G5, tied to the next measure.
- Measure 4: Quarter notes A5, B5, C6, D6, tied to the next measure.
- Measure 5: Quarter notes E6, F6, G6, A6, tied to the next measure.
- Measure 6: Quarter notes B6, C7, D7, E7, tied to the next measure.
- Measure 7: Quarter notes F7, G7, A7, B7, tied to the next measure.
- Measure 8: Quarter notes C8, B7, A7, G7, tied to the next measure.
- Measure 9: Quarter notes F7, E7, D7, C7, tied to the next measure.
- Measure 10: Quarter notes B6, A6, G6, F6, tied to the next measure.
- Measure 11: Quarter notes A6, G6, F6, E6, tied to the next measure.
- Measure 12: Quarter notes G6, F6, E6, D6, tied to the next measure.
- Measure 13: Quarter notes C6, B5, A5, G5, tied to the next measure.

Exercise #4

Exercise #4 is written in 4/4 time. It consists of 15 measures. The notation is as follows:

- Measure 1: Quarter notes C4, D4, E4, F4, tied to the next measure.
- Measure 2: Quarter notes G4, A4, B4, C5, tied to the next measure.
- Measure 3: Quarter notes D5, E5, F5, G5, tied to the next measure.
- Measure 4: Quarter notes A5, B5, C6, D6, tied to the next measure.
- Measure 5: Quarter notes E6, F6, G6, A6, tied to the next measure.
- Measure 6: Quarter notes B6, C7, D7, E7, tied to the next measure.
- Measure 7: Quarter notes F7, G7, A7, B7, tied to the next measure.
- Measure 8: Quarter notes C8, B7, A7, G7, tied to the next measure.
- Measure 9: Quarter notes F7, E7, D7, C7, tied to the next measure.
- Measure 10: Quarter notes B6, A6, G6, F6, tied to the next measure.
- Measure 11: Quarter notes A6, G6, F6, E6, tied to the next measure.
- Measure 12: Quarter notes G6, F6, E6, D6, tied to the next measure.
- Measure 13: Quarter notes C6, B5, A5, G5, tied to the next measure.
- Measure 14: Quarter notes F5, E5, D5, C5, tied to the next measure.
- Measure 15: Quarter notes B4, A4, G4, F4, tied to the next measure.

MVP Studies

For Marching Band

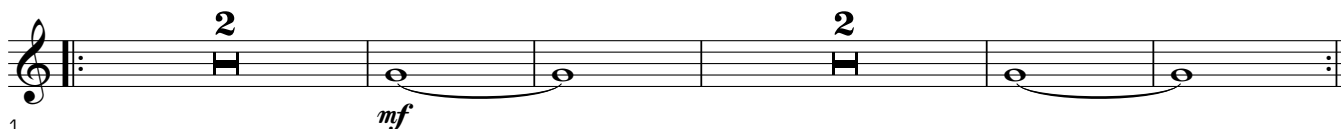
[Wind Only Supplement]

winds by: John M. Meehan

Exercise A



Exercise B



Exercise C



Exercise D



Exercise E



Horn in F

MVP Studies

For Marching Band

winds by: John M. Meehan
percussion by: Vinnie Angelo

Exercise #1

Exercise #1 is a musical study for Horn in F, written in 4/4 time. It consists of 25 measures. The notation is presented on five staves. The first staff contains measures 1 through 8. The second staff contains measures 9 through 14. The third staff contains measures 15 through 20. The fourth staff contains measures 21 through 24. The fifth staff contains measure 25, which ends with a double bar line. The melody is composed of eighth and quarter notes, often beamed together in pairs or groups of four, with frequent rests. The key signature has one flat (Bb).

Exercise #2

Exercise #2 is a musical study for Horn in F, written in 4/4 time. It consists of 27 measures. The notation is presented on five staves. The first staff contains measures 1 through 8. The second staff contains measures 9 through 14. The third staff contains measures 15 through 20. The fourth staff contains measures 21 through 26. The fifth staff contains measure 27, which ends with a double bar line. The melody is composed of half and quarter notes, often beamed together in pairs, with frequent rests. The key signature has one flat (Bb).

MVP Studies
*For Marching Band***Exercise #3**

1

7

13

Exercise #4

1

7

11

15

Horn in F

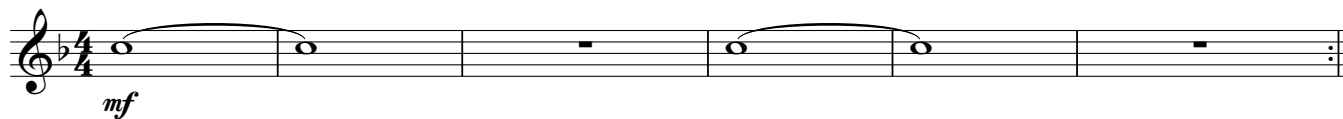
MVP Studies

For Marching Band

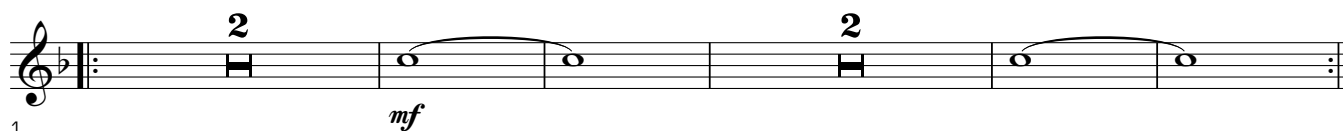
[Wind Only Supplement]

winds by: John M. Meehan

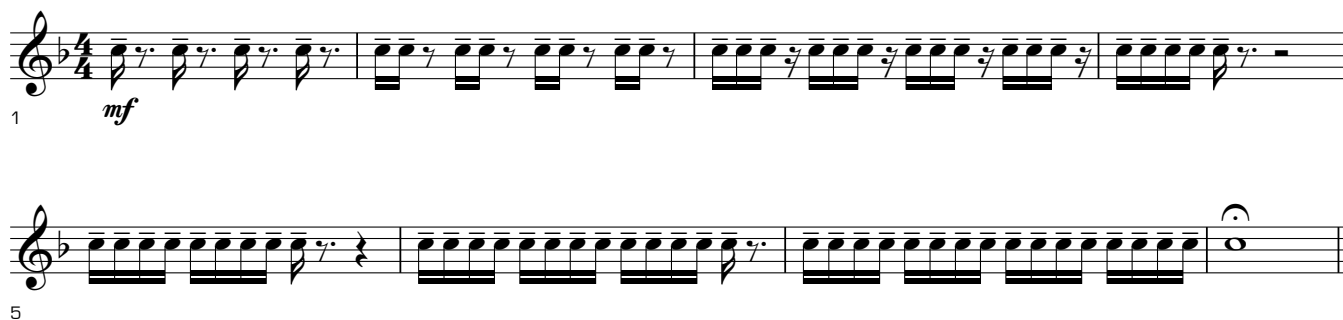
Exercise A



Exercise B



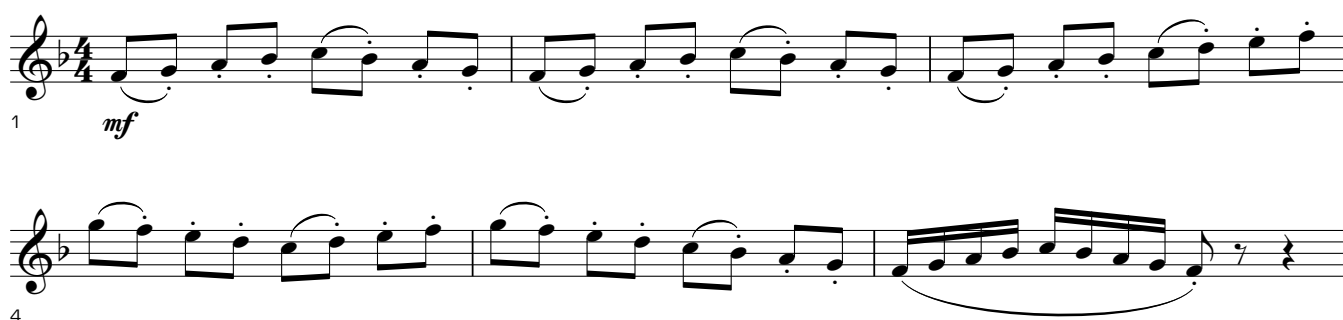
Exercise C



Exercise D



Exercise E



MVP Studies

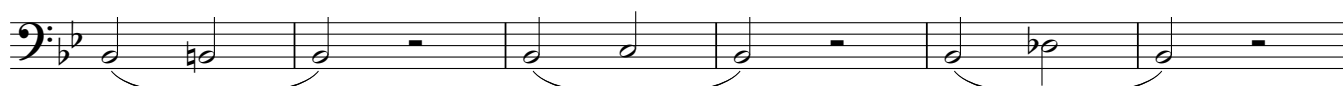
For Marching Band

winds by: John M. Meehan
percussion by: Vinnie Angelo

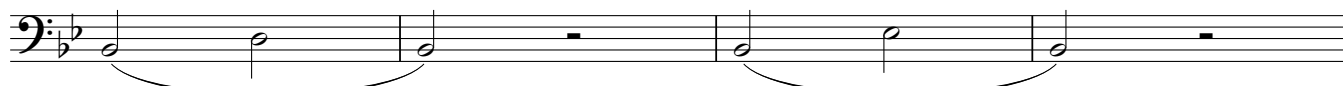
Exercise #1



9



15



21



25

Exercise #2



1



9



15



21



27

MVP Studies
*For Marching Band***Exercise #3**

1



7



13

Exercise #4

1



7



11



15

MVP Studies

For Marching Band

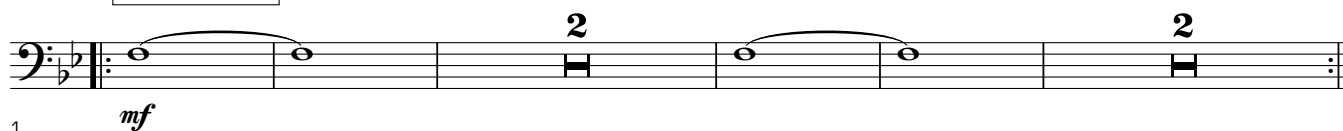
[Wind Only Supplement]

winds by: John M. Meehan

Exercise A



Exercise B



Exercise C



Exercise D



Exercise E



MVP Studies

For Marching Band

winds by: John M. Meehan
percussion by: Vinnie Angelo

Exercise #1

Exercise #1 is written in 4/4 time. It consists of five staves of music. The first staff contains measures 1 through 8. The second staff contains measures 9 through 14. The third staff contains measures 15 through 20. The fourth staff contains measures 21 through 24. The fifth staff contains measure 25, which ends with a double bar line. The melody is composed of eighth and quarter notes, often beamed in pairs or groups of four, with various accidentals (sharps, flats, and naturals) and rests.

Exercise #2

Exercise #2 is written in 4/4 time. It consists of five staves of music. The first staff contains measures 1 through 8. The second staff contains measures 9 through 14. The third staff contains measures 15 through 20. The fourth staff contains measures 21 through 26. The fifth staff contains measure 27, which ends with a double bar line. The melody is composed of eighth and quarter notes, often beamed in pairs or groups of four, with various accidentals (sharps, flats, and naturals) and rests.

MVP Studies
*For Marching Band***Exercise #3**

Exercise #3 is a 16-measure piece in 4/4 time. The notation is written on a single staff with a treble clef. The key signature has one sharp (F#). The melody consists of eighth and quarter notes, with rests. Measures 1-4: C4, D4, E4, F#4, G4, A4, B4, C5. Measures 5-8: C5, B4, A4, G4, F#4, E4, D4, C4. Measures 9-12: C4, D4, E4, F#4, G4, A4, B4, C5. Measures 13-16: C5, B4, A4, G4, F#4, E4, D4, C4. The piece ends with a final C4 note.

1

7

13

Exercise #4

Exercise #4 is a 16-measure piece in 4/4 time. The notation is written on a single staff with a treble clef. The key signature has one sharp (F#). The melody consists of eighth and quarter notes, with rests. Measures 1-4: C4, D4, E4, F#4, G4, A4, B4, C5. Measures 5-8: C5, B4, A4, G4, F#4, E4, D4, C4. Measures 9-12: C4, D4, E4, F#4, G4, A4, B4, C5. Measures 13-16: C5, B4, A4, G4, F#4, E4, D4, C4. The piece ends with a final C4 note.

1

7

11

15

MVP Studies

For Marching Band

[Wind Only Supplement]

winds by: John M. Meehan

Exercise A



Exercise B



Exercise C



Exercise D



Exercise E



Tuba

MVP Studies

For Marching Band

winds by: John M. Meehan
percussion by: Vinnie Angelo

Exercise #1

Exercise #1 is a 24-measure piece in 4/4 time, written for Tuba in B-flat major. The notation consists of five staves. The first staff contains measures 1 through 8, featuring eighth-note patterns with slurs. The second staff contains measures 9 through 14, with measure 9 starting on a lower line. The third staff contains measures 15 through 20. The fourth staff contains measures 21 through 23. The fifth staff contains measure 24, which ends with a double bar line. The key signature has two flats (B-flat and E-flat).

Exercise #2

Exercise #2 is a 27-measure piece in 4/4 time, written for Tuba in B-flat major. The notation consists of five staves. The first staff contains measures 1 through 8. The second staff contains measures 9 through 14. The third staff contains measures 15 through 20. The fourth staff contains measures 21 through 26. The fifth staff contains measure 27, which ends with a double bar line. The key signature has two flats (B-flat and E-flat).

MVP Studies

For Marching Band

Exercise #3

Exercise #3 is a 13-measure piece in 4/4 time, written for Tuba in B-flat major. The notation is as follows:

- Measure 1: Bass clef, B-flat, 4/4 time signature. Notes: B-flat (quarter), A-flat (quarter), G-flat (quarter), F (quarter), E-flat (half).
- Measure 2: Notes: D (quarter), C (quarter), B-flat (quarter), A-flat (quarter), G-flat (half).
- Measure 3: Notes: F (quarter), E-flat (quarter), D (quarter), C (quarter), B-flat (half).
- Measure 4: Notes: A-flat (quarter), G-flat (quarter), F (quarter), E-flat (quarter), D (half).
- Measure 5: Notes: C (quarter), B-flat (quarter), A-flat (quarter), G-flat (quarter), F (half).
- Measure 6: Notes: E-flat (quarter), D (quarter), C (quarter), B-flat (quarter), A-flat (half).
- Measure 7: Notes: G-flat (quarter), F (quarter), E-flat (quarter), D (quarter), C (half).
- Measure 8: Notes: B-flat (quarter), A-flat (quarter), G-flat (quarter), F (quarter), E-flat (half).
- Measure 9: Notes: D (quarter), C (quarter), B-flat (quarter), A-flat (quarter), G-flat (half).
- Measure 10: Notes: F (quarter), E-flat (quarter), D (quarter), C (quarter), B-flat (half).
- Measure 11: Notes: A-flat (quarter), G-flat (quarter), F (quarter), E-flat (quarter), D (half).
- Measure 12: Notes: C (quarter), B-flat (quarter), A-flat (quarter), G-flat (quarter), F (half).
- Measure 13: Notes: E-flat (quarter), D (quarter), C (quarter), B-flat (quarter), A-flat (half).

Exercise #4

Exercise #4 is a 15-measure piece in 4/4 time, written for Tuba in B-flat major. The notation is as follows:

- Measure 1: Bass clef, B-flat, 4/4 time signature. Notes: B-flat (quarter), A-flat (quarter), G-flat (quarter), F (quarter), E-flat (half).
- Measure 2: Notes: D (quarter), C (quarter), B-flat (quarter), A-flat (quarter), G-flat (half).
- Measure 3: Notes: F (quarter), E-flat (quarter), D (quarter), C (quarter), B-flat (half).
- Measure 4: Notes: A-flat (quarter), G-flat (quarter), F (quarter), E-flat (quarter), D (half).
- Measure 5: Notes: C (quarter), B-flat (quarter), A-flat (quarter), G-flat (quarter), F (half).
- Measure 6: Notes: E-flat (quarter), D (quarter), C (quarter), B-flat (quarter), A-flat (half).
- Measure 7: Notes: G-flat (quarter), F (quarter), E-flat (quarter), D (quarter), C (half).
- Measure 8: Notes: B-flat (quarter), A-flat (quarter), G-flat (quarter), F (quarter), E-flat (half).
- Measure 9: Notes: D (quarter), C (quarter), B-flat (quarter), A-flat (quarter), G-flat (half).
- Measure 10: Notes: F (quarter), E-flat (quarter), D (quarter), C (quarter), B-flat (half).
- Measure 11: Notes: A-flat (quarter), G-flat (quarter), F (quarter), E-flat (quarter), D (half).
- Measure 12: Notes: C (quarter), B-flat (quarter), A-flat (quarter), G-flat (quarter), F (half).
- Measure 13: Notes: E-flat (quarter), D (quarter), C (quarter), B-flat (quarter), A-flat (half).
- Measure 14: Notes: G-flat (quarter), F (quarter), E-flat (quarter), D (quarter), C (half).
- Measure 15: Notes: B-flat (quarter), A-flat (quarter), G-flat (quarter), F (quarter), E-flat (half).

Tuba

MVP Studies

For Marching Band

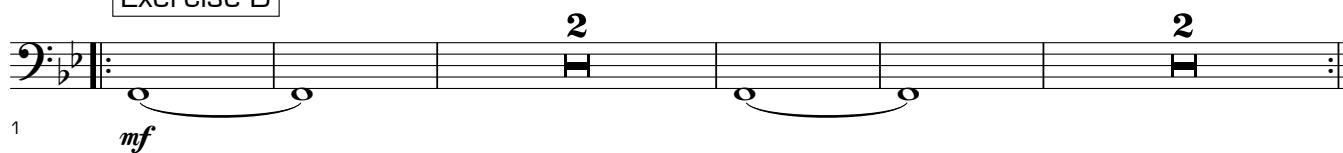
[Wind Only Supplement]

winds by: John M. Meehan

Exercise A



Exercise B



Exercise C



Exercise D



Exercise E

