



MINNESOTA BRASS
DRUM & BUGLE CORPS

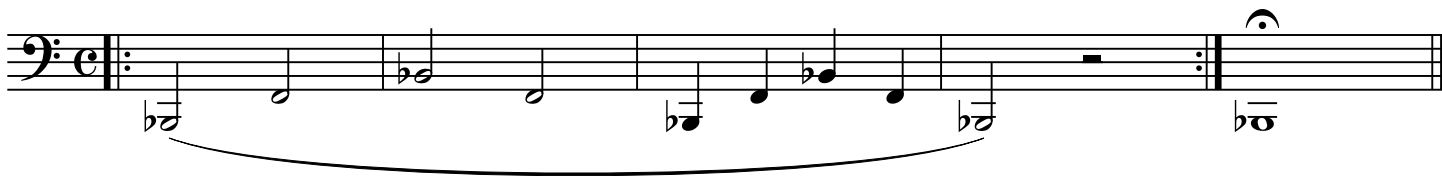
Techniques for Exceptional Ensemble

2014

Tuba

Lip Flexibility

1



2



3



4



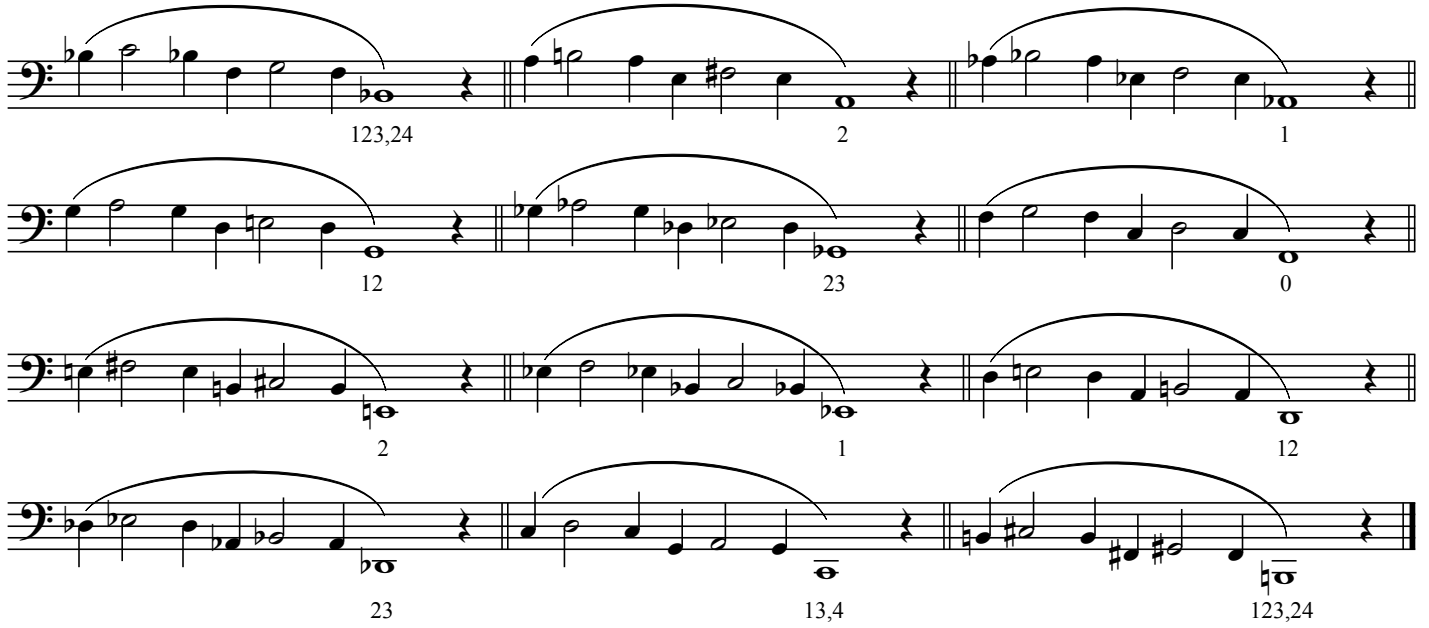
5



Stamp Symphony #3A

Tuba

James Stamp



Musical score for Stamp Symphony #3A, Tuba part. The score consists of four staves of music in bass clef. Each staff contains three measures of music, with a double bar line after the first measure. The notes are connected by a long slur. Fingerings are indicated by numbers 0, 1, 2, and 12. The notes are: Staff 1: 123,24, 2, 1; Staff 2: 12, 23, 0; Staff 3: 2, 1, 12; Staff 4: 23, 13,4, 123,24.

Stamp Symphony #3B



Musical score for Stamp Symphony #3B, Tuba part. The score consists of six staves of music in bass clef. Each staff contains a single measure of music with a long slur over the notes. The notes are: Staff 1: 0; Staff 2: 123,24; Staff 3: 13,4; Staff 4: 23; Staff 5: 12; Staff 6: 1.

Stamp Symphony #3

Tuba



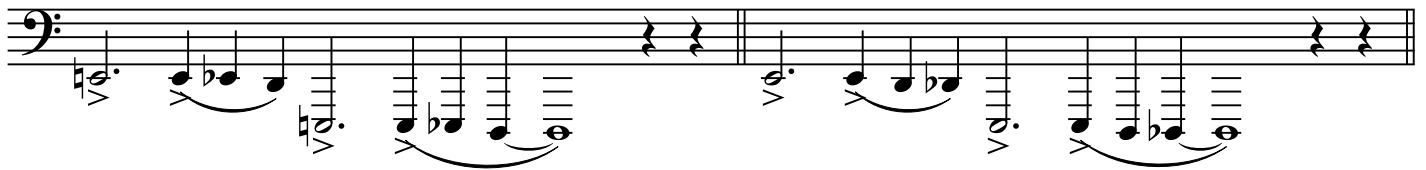
First musical staff for Tuba, featuring a bass clef and a key signature of one flat. The staff contains two measures of music with various rhythmic values and articulation marks.



Second musical staff for Tuba, continuing the piece with similar rhythmic patterns and articulation.



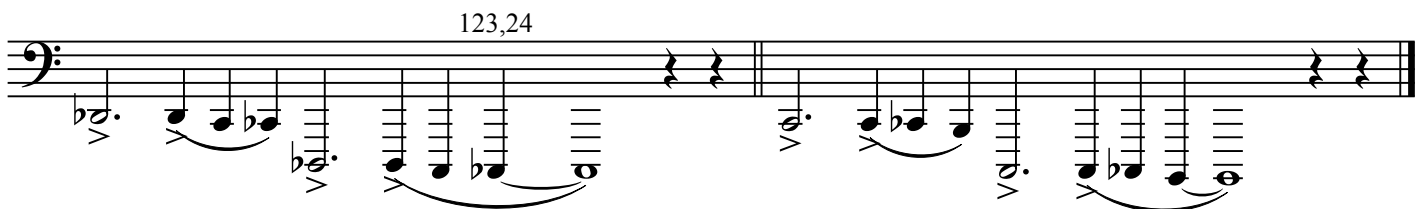
Third musical staff for Tuba, showing further development of the musical theme.



Fourth musical staff for Tuba, featuring a change in the melodic line.



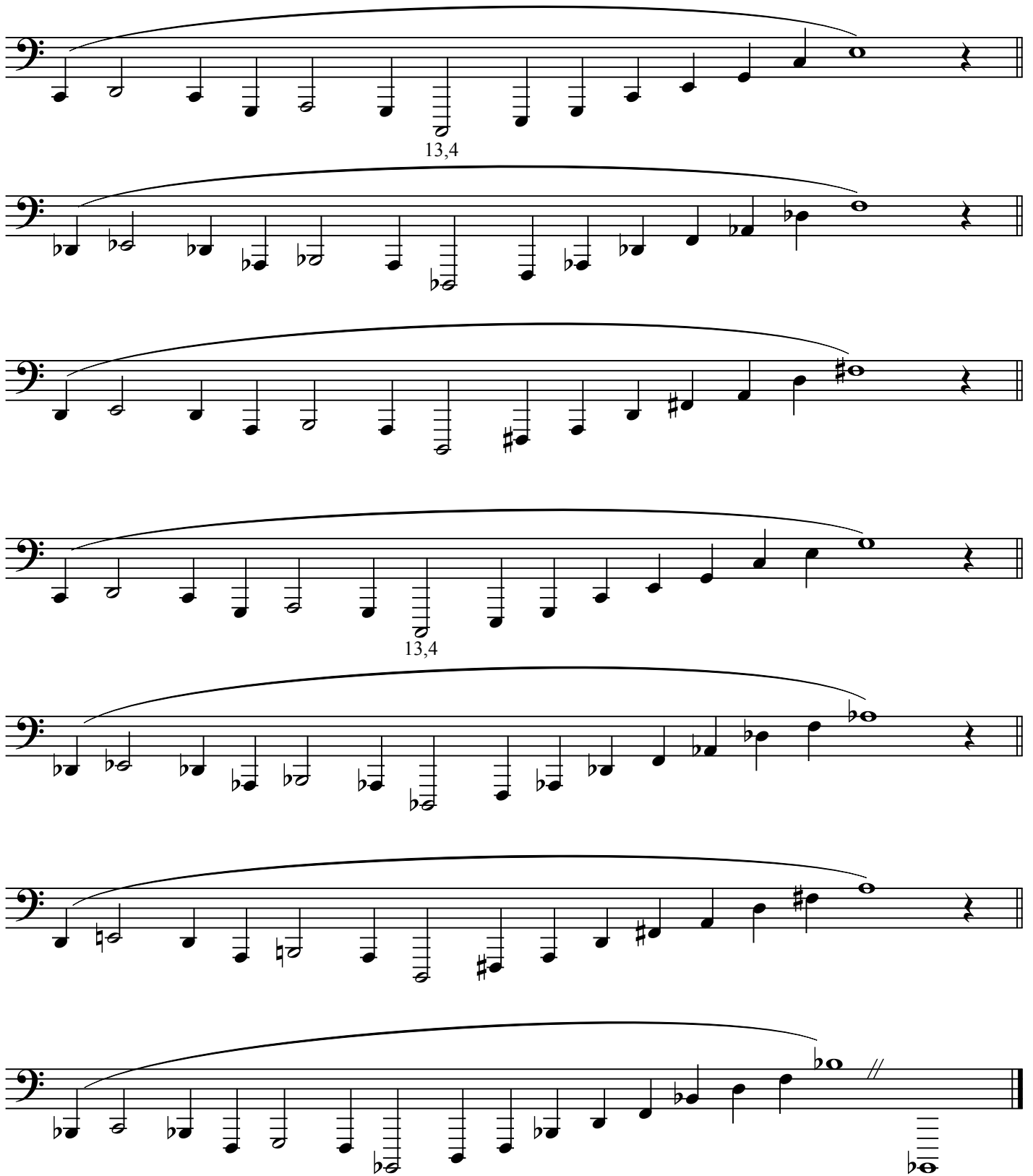
Fifth musical staff for Tuba, with a measure number '13,4' positioned above the staff.



Sixth musical staff for Tuba, with a measure number '123,24' positioned above the staff.

Stamp Symphony #4

Tuba

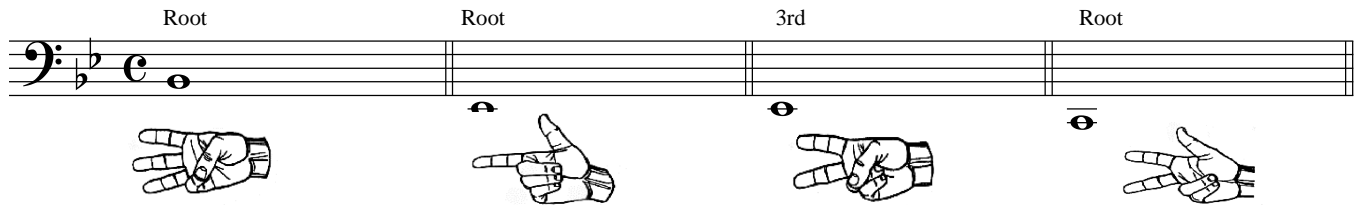


The musical score for the Tuba part of Stamp Symphony #4 consists of seven staves of music. Each staff begins with a bass clef and a common time signature. The music is characterized by a series of eighth and sixteenth notes, often grouped in pairs or fours, and is frequently tied across bar lines. The notes are primarily in the lower register of the tuba. The first staff includes a dynamic marking of $13,4$ below the staff. The second staff includes a dynamic marking of $b5$ below the staff. The third staff includes a dynamic marking of $\#5$ below the staff. The fourth staff includes a dynamic marking of $13,4$ below the staff. The fifth staff includes a dynamic marking of $b5$ below the staff. The sixth staff includes a dynamic marking of $\#5$ below the staff. The seventh staff includes a dynamic marking of $b5$ below the staff and ends with a double bar line and a repeat sign. The music concludes with a final note on the seventh staff.

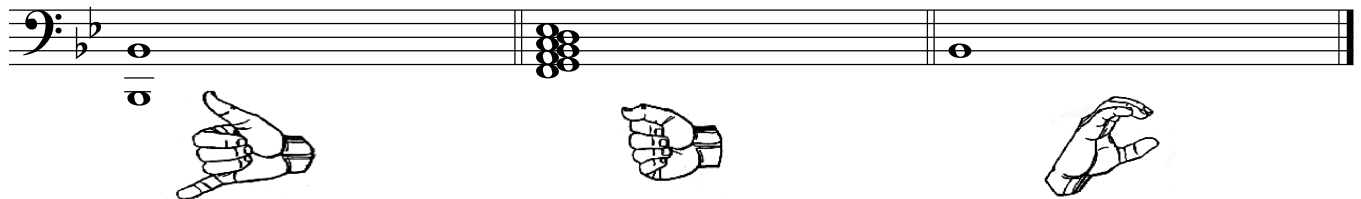
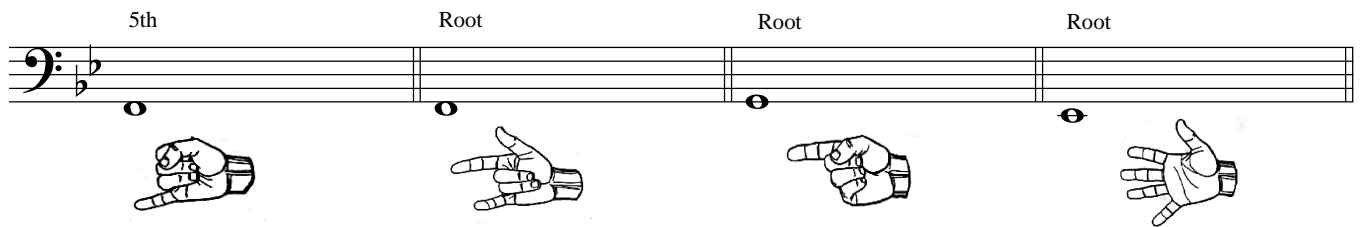
Chorale Studies

I. Simple

Root Root 3rd Root



5th Root Root Root



Lip Flexibility 2

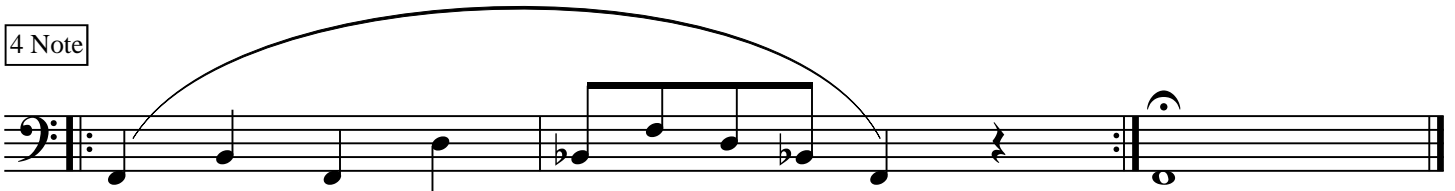
2 Note



3 Note



4 Note



5 Note Down



5 Note Up



Tuba

Combo Platter

The musical score for the Tuba part of 'Combo Platter' is written in bass clef, 2/4 time, and B-flat major. It consists of six staves of music. The first staff begins with a series of eighth notes, followed by a half note with an accent (^) and a quarter rest. The second staff continues with eighth notes and a half note with an accent (^). The third staff features eighth notes and a half note with an accent (^). The fourth staff contains eighth notes and a half note with an accent (^). The fifth staff has eighth notes and a half note with an accent (^). The sixth staff concludes with eighth notes and a half note with an accent (^).